

The Most Recent Case of Study

CASE STUDY REPORT RICE FIELD TEST (LONG FINE RIBE)



CASE STUDY REPORT

RICE FIELD TEST (LONG FINE RIBE)

- A field of about 5 hectares has been chosen, located in Lomellina (North of Italy)
- The area is cultivated with rice "Oryza Sativa" cultivar RIBE (type "Lungo Fino"), for a purpose comparative was assigned to the field a portion of about 36/48 m wide
- The useful strip is agricultural machinery has been taken into consideration, therefore the portion or surface covered by the experimentation is obtained from the length of the field of about 280 m
- For the strip indicated above a starting from the embankment of the irrigation canal on the right side of the lot, on which there is a tree, as shown in the photo aerial; therefore the area corresponds approximately to 1 / 1.3 ha

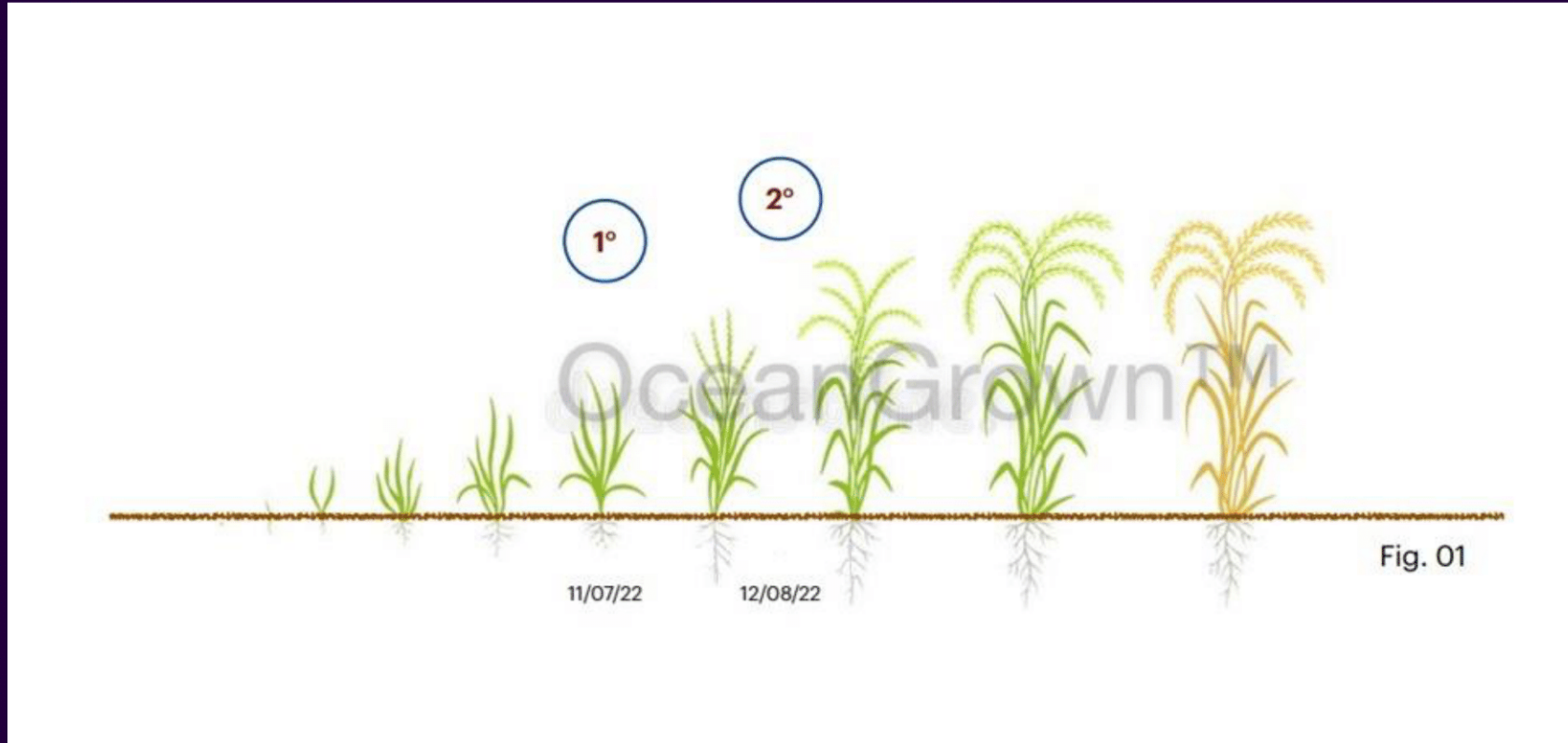
CASE STUDY REPORT

RICE FIELD TEST (LONG FINE RIBE)

- The variability of the treated surface is given precisely by the impossibility of having just one machine
the agricultural standard for the different steps
- In the description of the experiment carried out, each step carried out with the related surfaces treated and the reference data will be specified

CASE STUDY REPORT

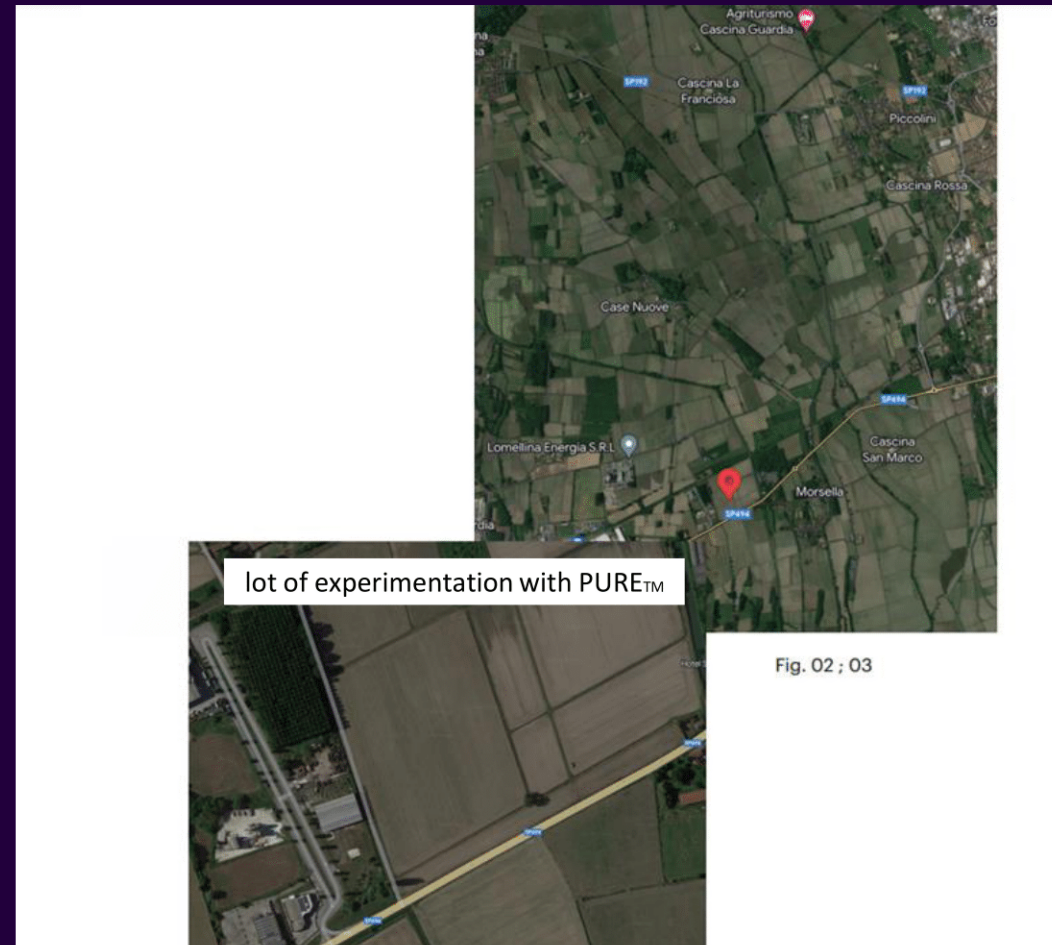
RICE FIELD TEST (LONG FINE RIBE)



Above (Fig. 01) we have reported the cultivation time-line summarizing the agrotechnical steps and Product administrations.

CASE STUDY REPORT

RICE FIELD TEST (LONG FINE RIBE)



lot of experimentation with PURE™

Fig. 02 ; 03

CASE STUDY REPORT

RICE FIELD TEST (LONG FINE RIBE)

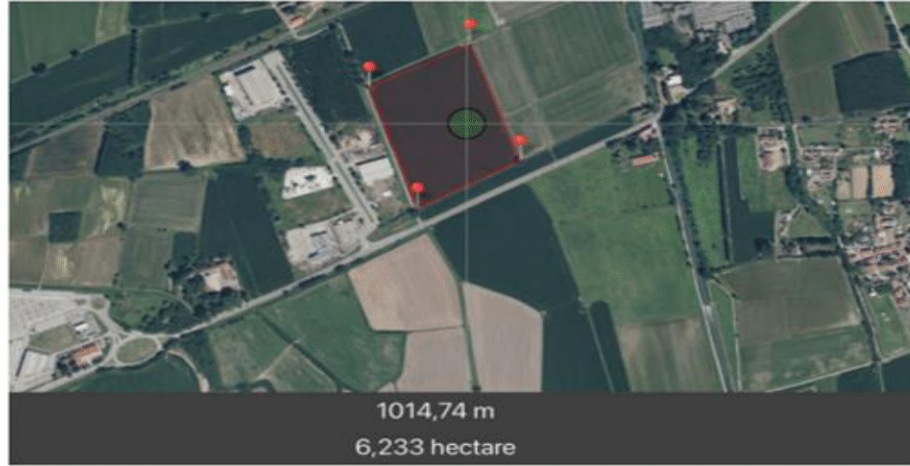


Fig. 04



Fig. 05: 06

CASE STUDY REPORT

RICE FIELD TEST (LONG FINE RIBE)

Perspective photo of the treated area
20/08/2022



Fig. 07; 08

Perspective photo of the untreated area
20/08/2022



Fig. 09

CASE STUDY REPORT

RICE FIELD TEST (LONG FINE RIBE)



Fig. 10

TREATMENT DATA 1

LENGHT	36 m	
WIDTH	282 m	
SPRAYED AREA	1 ha	
PHASE	END OF BOTTICELLA INVAIATION	11/07/2022
DOSAGE	1 L / 100	3 Litri pure
TOTAL SPRAYED	300 Lit /ha	300 Lit



Fig. 11; 12

CASE STUDY REPORT

RICE FIELD TEST (LONG FINE RIBE)

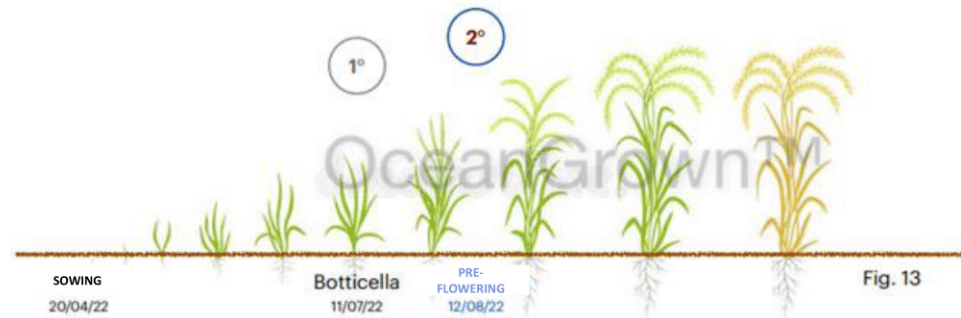


Fig. 13

TREATMENT DATA 2

LENGHT	48 m	
WIDTH	282 m	
SPRAYED AREA	1,33 ha	
PHASE	Pre - flowering	12/08/2022
DOSAGE	1 L / 100	6 Litri pure
TOTAL SPRAYED	450 Lit /ha	600 Lit



Fig. 14; 15

CASE STUDY REPORT

RICE FIELD TEST (LONG FINE RIBE)

COMPARATIVE REPORT



Photo of ear in the treated area
20/08/2022

Photo of ear in the untreated area
20/08/2022

VISUAL COMPARISON



Fig. 16; 17

CASE STUDY REPORT

RICE FIELD TEST (LONG FINE RIBE)

SAMPLE DATA COLLECTED IN THE TREATED AREA 20/08/2022

LENGTH (C1 cm)	WEIGHT C1 g
17.00	6.00
20.00	5.58
19.00	5.95
22.00	7.05
20.00	6.73
20.00	7.89
19.00	6.88
17.20	6.02
19.00	6.02
21.50	5.47

SAMPLE DATA COLLECTED IN THE CONTROLLED AREA 20/08/2022

LENGTH (C2 cm)	WEIGHT C2 g
16.00	5.00
19.70	5.03
19.00	5.39
19.00	5.16
20.00	5.42
19.00	4.88
19.00	5.91
17.00	5.38
20.00	6.22
11.50	3.49

CASE STUDY REPORT

RICE FIELD TEST (LONG FINE RIBE)

SAMPLE DATA COLLECTED IN THE TREATED AREA 20/08/2022

	LENGTH C1 cm	WEIGHT C1 g
AVERAGE	19.47	6.36
MEDIAN	19.50	6.02
MAX	22.00	7.89

SAMPLE DATA COLLECTED IN THE CONTROLLED AREA 20/08/2022

	LENGTH C1 cm	WEIGHT C1 g
AVERAGE	18.02	5.19
MEDIAN	19.00	5.27
MAX	20.00	6.22

CASE STUDY REPORT

RICE FIELD TEST (LONG FINE RIBE)

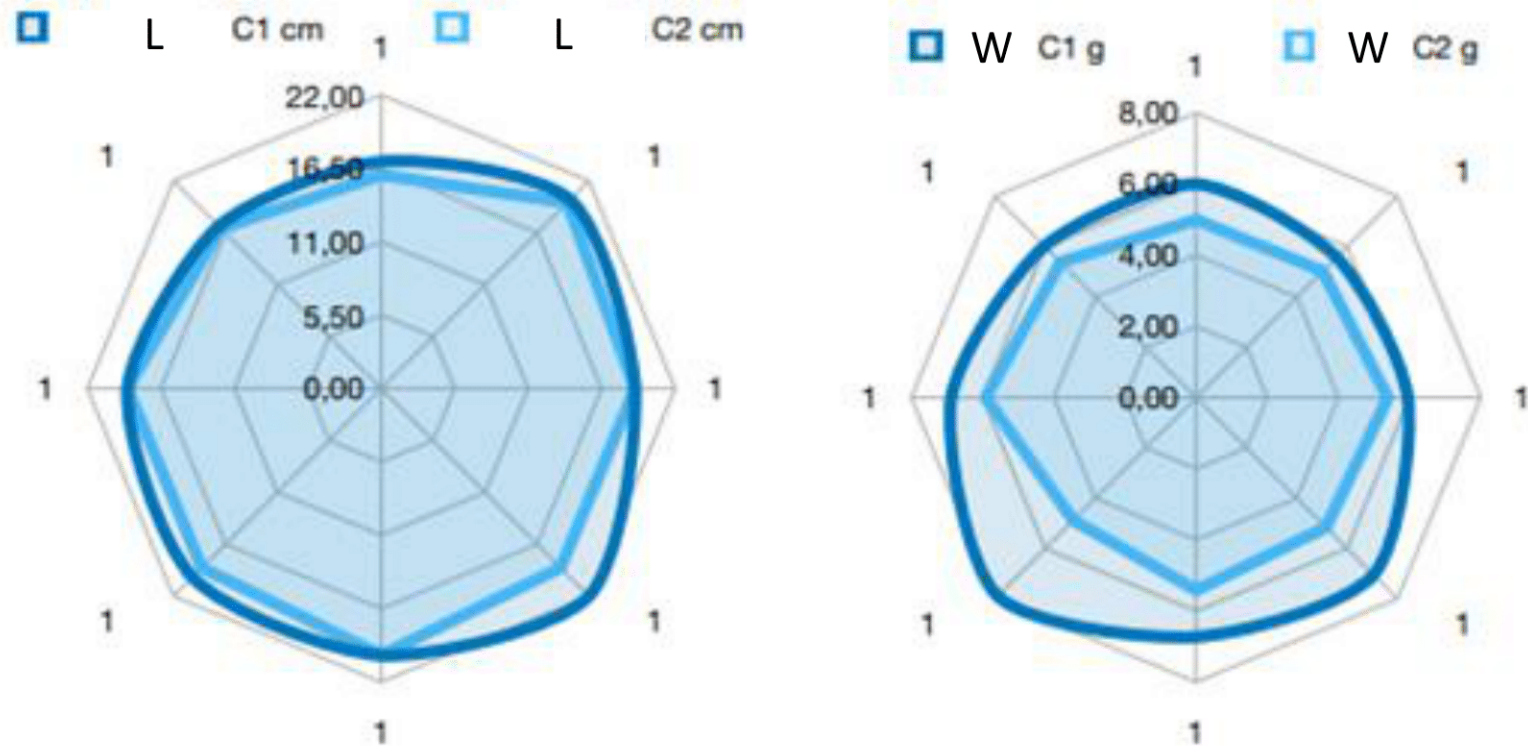


Fig. 20; 21

CASE STUDY REPORT

RICE FIELD TEST (LONG FINE RIBE)

Ear photo in the treated area
08/20/2022



Fig. 22; 23



Fig. 24; 25

Ear photo in untreated area
(control area)
08/20/2022

CASE STUDY REPORT

RICE FIELD TEST (LONG FINE RIBE)



CASE STUDY REPORT

RICE FIELD TEST (LONG FINE RIBE)

- Total dimension of the field: 5 ha
- Total dimension of the field treated with Oceangrown PURE™ 1 ha
- Based on the data provided, the usage of Oceangrown PURE™ has increased the quantity of production by 20%
- High-quality products can be placed into the market as certified with a classification that can be considered more than the usual Organic/NON GMO.
- No treatments with pesticides, fungicides, or other chemicals were required
- Certified ORGANIC+ by OceanGrown Canada Ltd.

